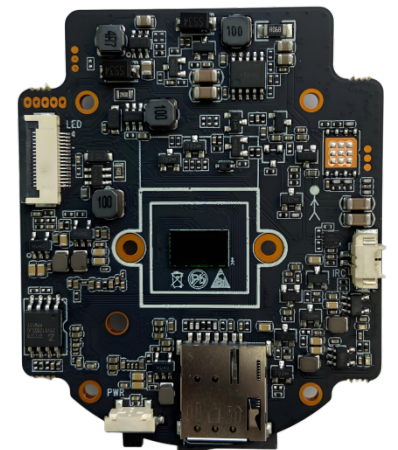
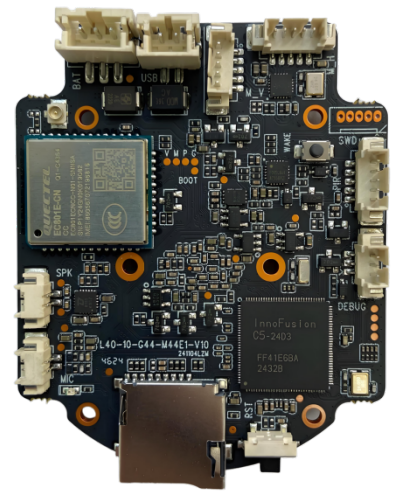




L40-20

Features:

- Low power consumption, All-Weather recording, quick startup, reduced false alarms. Capable of adapting to various environments, providing a more reliable 4G monitoring solution
- Full-Color images with ultra-Low illumination
- Supports AI human detection Wake-Up
- Offers performance mode and Energy-Saving mode, providing a flexible choice of multiple visual solutions.
- Supports dual motor drive and human tracking
- Supports solar/USB charging
- The battery meter provides more precise detection of battery level through built-in algorithms.
- Compatible with low power consumption during power outages, PIR triggering to enhance monitoring endurance in extreme environments.
- Charge pump conversion, supporting 8Ω2W @4.2V speaker output
- Supports PWM dimming with built-in led constant current drive
- Supports 512GB TF card
- power off with ultra-low power consumption for storage
- Supports Android & IOS

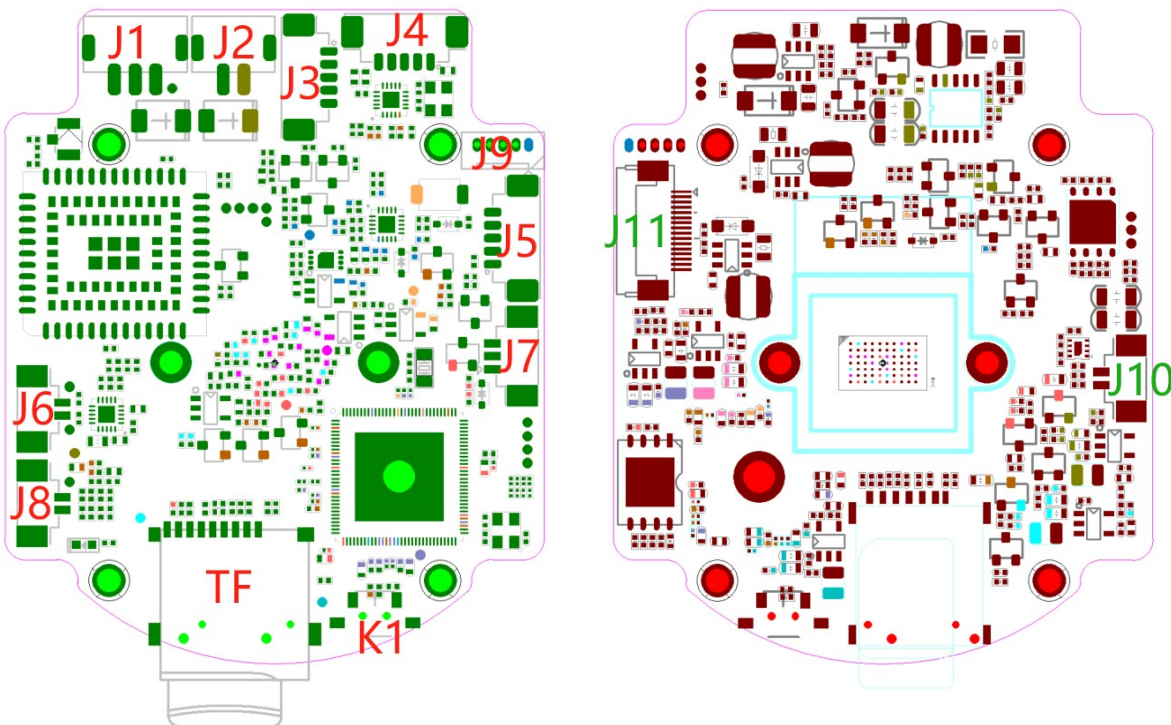


Product model	L40-20
SOC processor	SSC305DE, built-in 1.5T computing power
Image Sensor	4M, 1/1.8 inch progressive scan CMOS
Video	Main Stream 30FPS (2560*1440, 2304*1296, 1920*1080, 1280*720)
	Energy-saving mode: 1/5 FPS/S Performance mode: 1/2 FPS/S
Network	Image effects: Automatic white balance, support for digital wide dynamic range, support for backlight compensation, adjustable brightness, contrast, and chroma parameters.
	4G LTE Cat1, uplink 5Mbps, downlink 10Mbps
	Supports 1 nano SIM and 1 eSIM
Audio	1 line in, 1 Speaker (8Ω2W)
Motor	2 channels STM driver 64 u-step driving



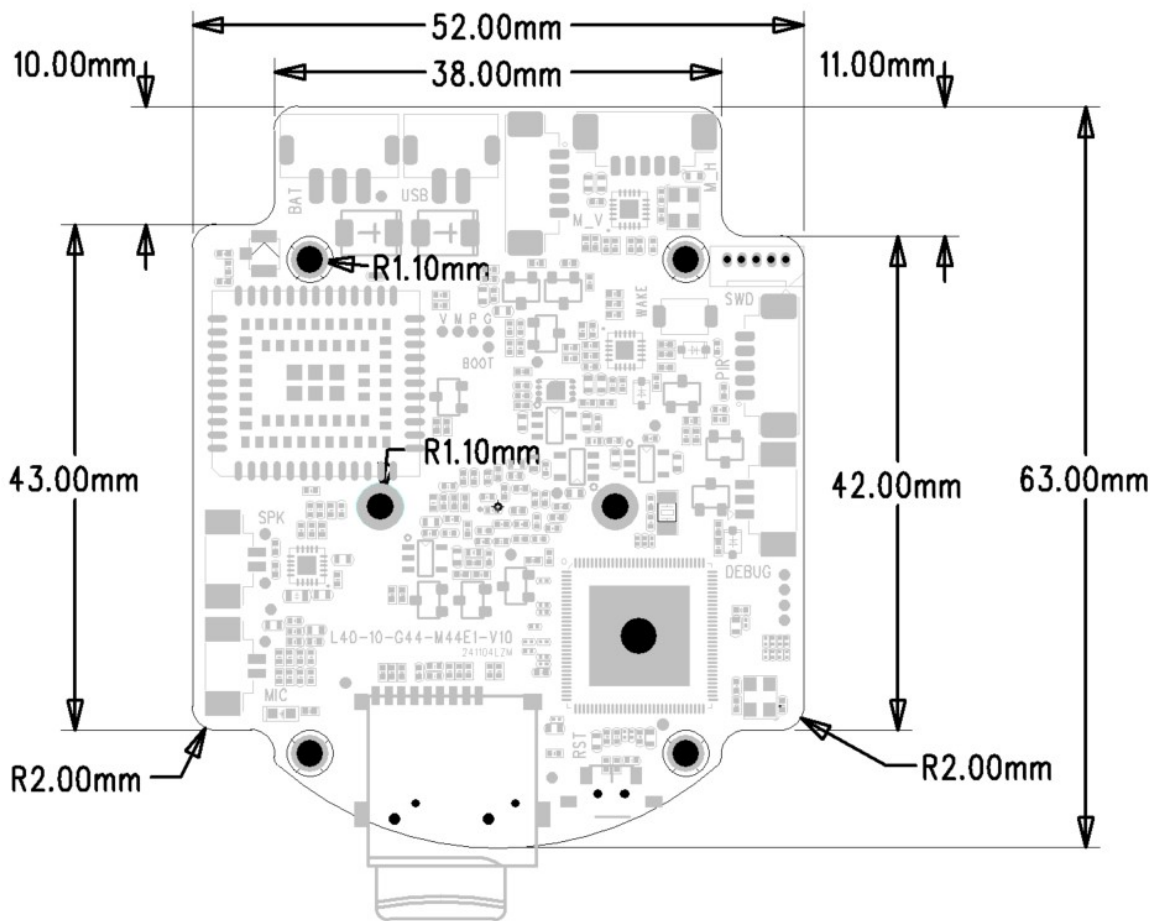
PIR	Yes, Supports 1 input
TF	Supports 512GB TF card
Power Key	Yes, Long press to power on/off, power off with ultra-low power consumption for storage
Reset Key	Yes, Long press to restore factory settings
Smart Supplement Light	Infrared/white light control by electrical level or PWM
Indicator	Supports charging indicator and network status indicator
Power level detection	Supports
charge	5V/2A input
Emc	GB/T17626.5, IEC61000-4-5
Protocols	TCP/TP, IPv4, DHCP, RTSP, P2P
APP	Android & IOS
Power	3.7V Li-ion battery & 5V solar input
Operating Conditions	-30°C~65°C
Dimension	52*63mm

Main board





Board Outline



Interface Description: (left 1 as pin 1)

J1 (SMT-2P-2.0MM-V) -----Battery

Pin	Name	Function
1	BAT_VIN	Power input for Li-ion battery
2	GND	GND

J2 (SMT-2P-1.25MM-V) -----Solar power in

Pin	Name	Function
1	POWER_IN	Power input for solar/USB
2	GND	GND



J3 (SMT-5P-1.25MM-V) -----Vertical motor

Pin	Name	Function
1	5V_MOTOR	Motor_COM
2	V01+	Motor V01+
3	V01-	Motor V01-
4	V02+	Motor V02+
5	V02-	Motor V02-

J4 (SMT-5P-1.25MM-V) -----Horizontal motor

Pin	Name	Function
1	5V_MOTOR	Motor_COM
2	H01+	Motor H01+
3	H01-	Motor H01-
4	H02+	Motor H02+
5	H02-	Motor H02-

J5 (SMT-3P-1.25MM-V) -----PIR

Pin	Name	Function
1	VBAT	Power output of li-ion battery
2	GND	GND
3	PIR_IN	PIR signal input, high active

J6 (SMT-2P-1.25MM-H) -----Speaker

Pin	Name	Function
1	SPK+	Speaker+(8 Ω 2W)
2	SPK-	Speaker- (8 Ω 2W)

J7 (SMT-3P-1.25MM-V) -----Debug

Pin	Name	Function
1	DEBUG_TX	DEBUG_TX
2	DEBUG_RX	DEBUG_RX
3	GND	GND

J8 (SMT-2P-1.25MM-H) -----MIC

Pin	Name	Function
1	MIC+	Line in+
2	MIC-	Line in-



J9 (DIP-5P-1.25MM-V) ----MCU Programming

Pin	Name	Function
1	MCU_3V3	MCU power in
2	SWCLK	SWD CLK
3	SWDIO	SWD DATA
4	RESET	SWD RESET
5	GND	GND

J10 (SMT-2P-1.25MM-H) ----IRCUT

Pin	Name	Function
1	IRCUT1+	IRCUT1+
2	IRCUT1-	IRCUT1-

J11 (FPC-16P-0.5MM-UP) ----LED

Pin	Name	Function
1	IR_LED0-	Negative terminal of infrared light, default constant current output of 150mA
2	IR_LED0-	Negative terminal of infrared light, default constant current output of 150mA
3	IR_LED0+	Positive terminal of infrared light, default constant current output of 150mA
4	IR_LED0+	Positive terminal of infrared light, default constant current output of 150mA
5	WL_LED1-	Negative terminal of infrared light, default constant current output of 300mA
6	WL_LED1-	Negative terminal of infrared light, default constant current output of 300mA
7	WL_LED1+	Positive terminal of infrared light, default constant current output of 300mA
8	WL_LED1+	Positive terminal of infrared light, default constant current output of 300mA
9	LED_LINK	Network connection status indicator light
10	LED_ACT	Network carrier signal indicator light
11	GND	System Ground
12	IR_ADC_C	Photodiode signal input
13	3V3_normal	Power supply for photodiode
14	CHRG_1	Charging status indicator light
15	DONE_1	Charging complete indicator light
16	POWER_OUT	Power supply for charging indicator light

K1----Factory recovery

K2----Power on/off